

RESIDENTIAL SALES  
LETTINGS & PROPERTY  
MANAGEMENT

COWLING  
& PAYNE



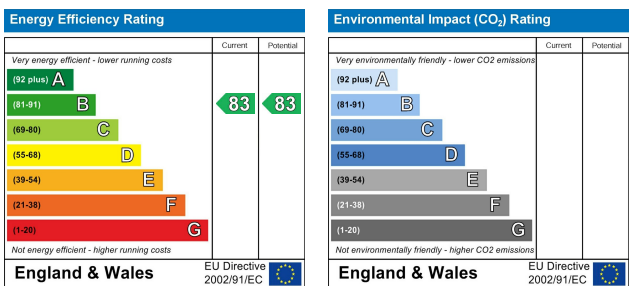
Bruton Link, Wickford  
£1,000

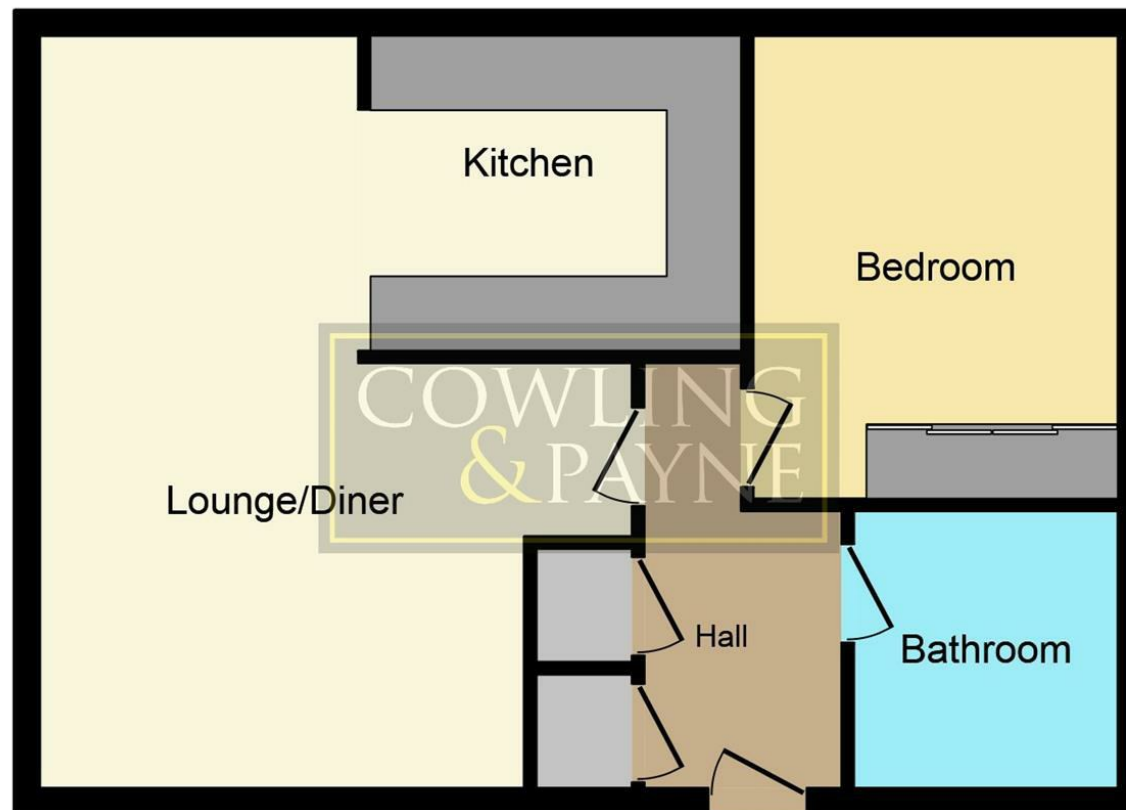


**\*\* CPO9239 ONLINE ENQUIRIES ONLY \*\*** COWLING AND PAYNE ARE DELIGHTED TO OFFER THIS ONE BEDROOM GROUND FLOOR APARTMENT SITUATED ON THE EVER POPULAR 'ST LUKES PARK' DEVELOPMENT. THIS PROPERTY HAS THE BENEFIT OF BEING NEAR TO MAIN ROAD LINKS SUCH AS THE A130, A12 & A127.



- Communal Entrance Hall
- Entrance Hall
- Bathroom
- Double Bedroom
- Open Planned Lounge/Kitchen/Diner
- Allocated Parking





**Floor Plan**

This plan is for illustration purposes only and may not be representative of the property. Plan not to scale.

You may download, store and use the material for your own personal use and research. You may not republish, retransmit, redistribute or otherwise make the material available to any party or make the same available on any website, online service or bulletin board of your own or of any other party or make the same available in hard copy or in any other media without the website owner's express prior written consent. The website owner's copyright must remain on all reproductions of material taken from this website.



